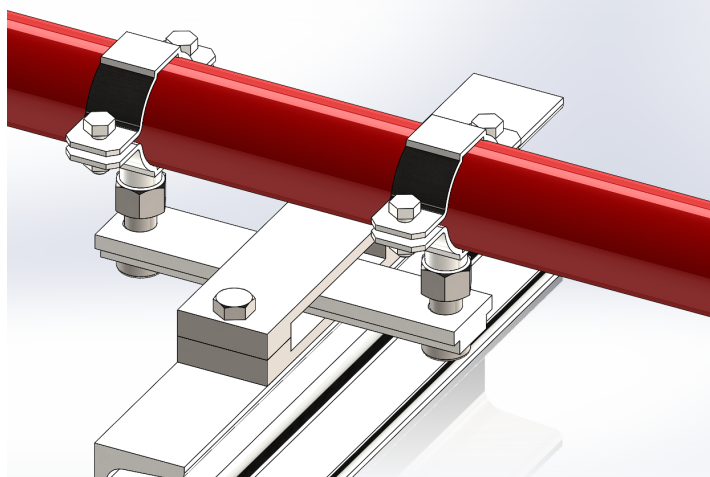


Low Profile Skid Support M16



Product Description

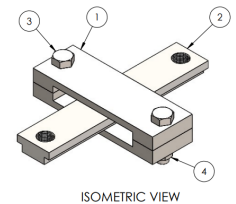
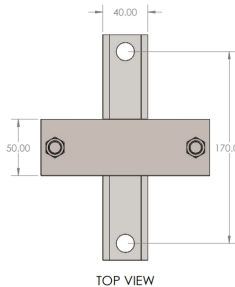
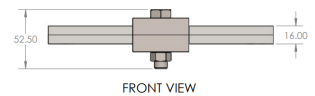
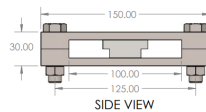
Designed to allow free axial and lateral movement of pipe while restricting vertical lifting movement.

These are purposely designed for the challenging application where the pipe is moving in multiple directions like offsets or pipe loops.

These can be floor or ceiling mounted and are suitable for connections to Unistrut.

Design Features

- 2 Fixings Holes with M12 Bolts
- M16 Connections to pipe clips
- Zinc Plated or Zinc Nickel Finish
- Low Friction Slide Insert
- Not supplied with Clips
- Movement is +/- 25mm in all directions



Part Number	Connection	Bi-lateral Movement	MAX Temp.	Load Vertical (Hung)	Load Vertical (Sat)
MTS-SKD-M16	2x M16	+/-25mm	200	10kN	15kN
MTS-SKD-ZN-M16	2x M16	+/-25mm	200	10kN	15kN

Please note this document can be subject to alteration without notification. Issue 17.10.22